

# HOW TO PLAY A THIRD-PARTY CHESS ENGINE ON THE CITRINE VIA ARENA

The Novag Citrine is compatible with ARENA, a Graphical User Interface (GUI) for chess programs by MARTIN BLUME. Please refer to the following website for copyright and licensing prior to usage:

<http://www.playwitharena.com/directory/copyright.htm>

ARENA's GUI can be used to override the CITRINE chess engine and thus enable you to play third-party chess engines (providing they support the ARENA software) such as RYBKA ( <http://www.rybkachess.com/> ).

1. Download your preferred chess engine which is compatible with ARENA, e.g. RYBKA and save it in an easily accessible place such as DESKTOP.

2. Set up your Citrine:

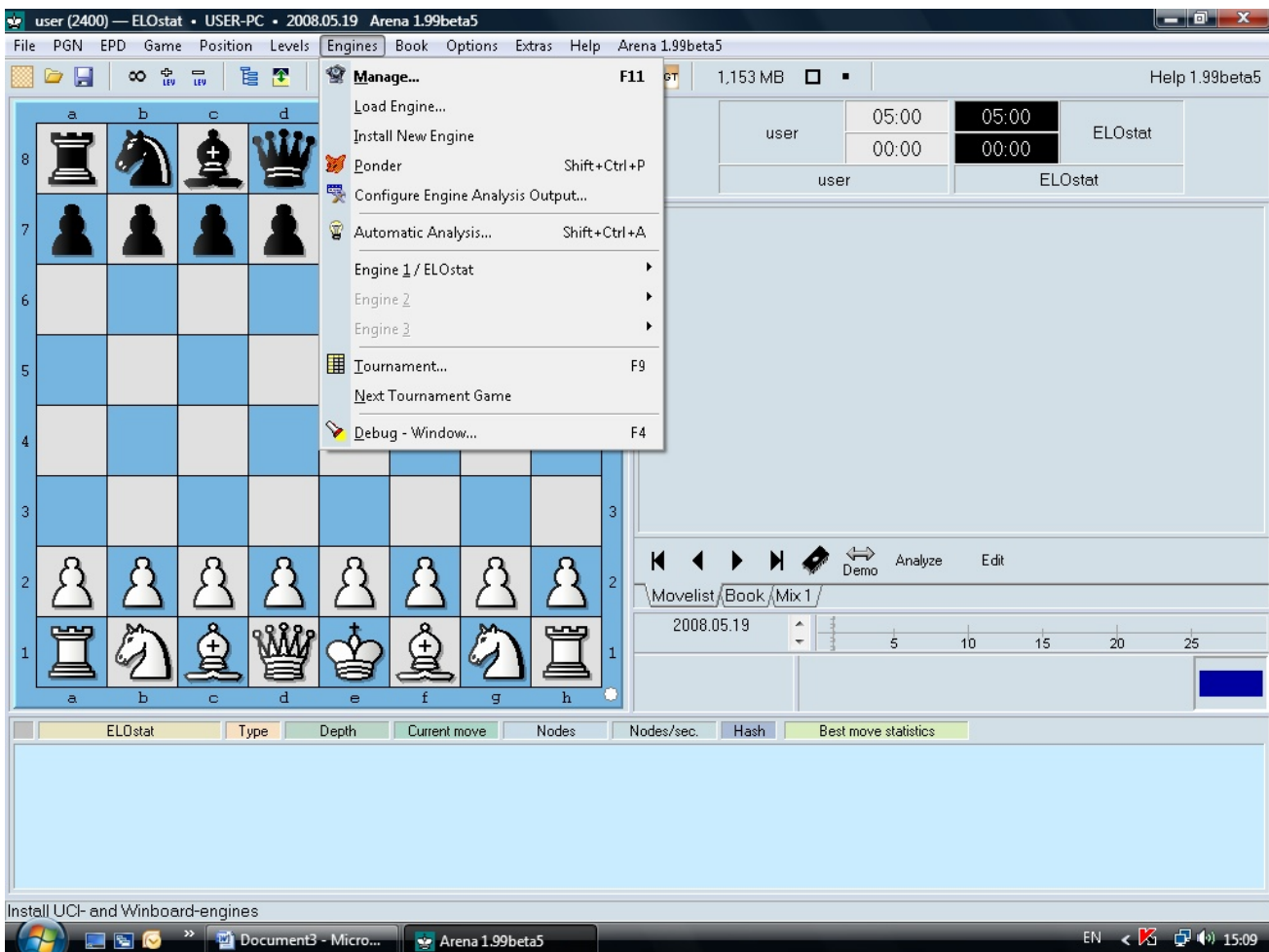
Connect the Citrine to the mains

Connect the Citrine to your PC

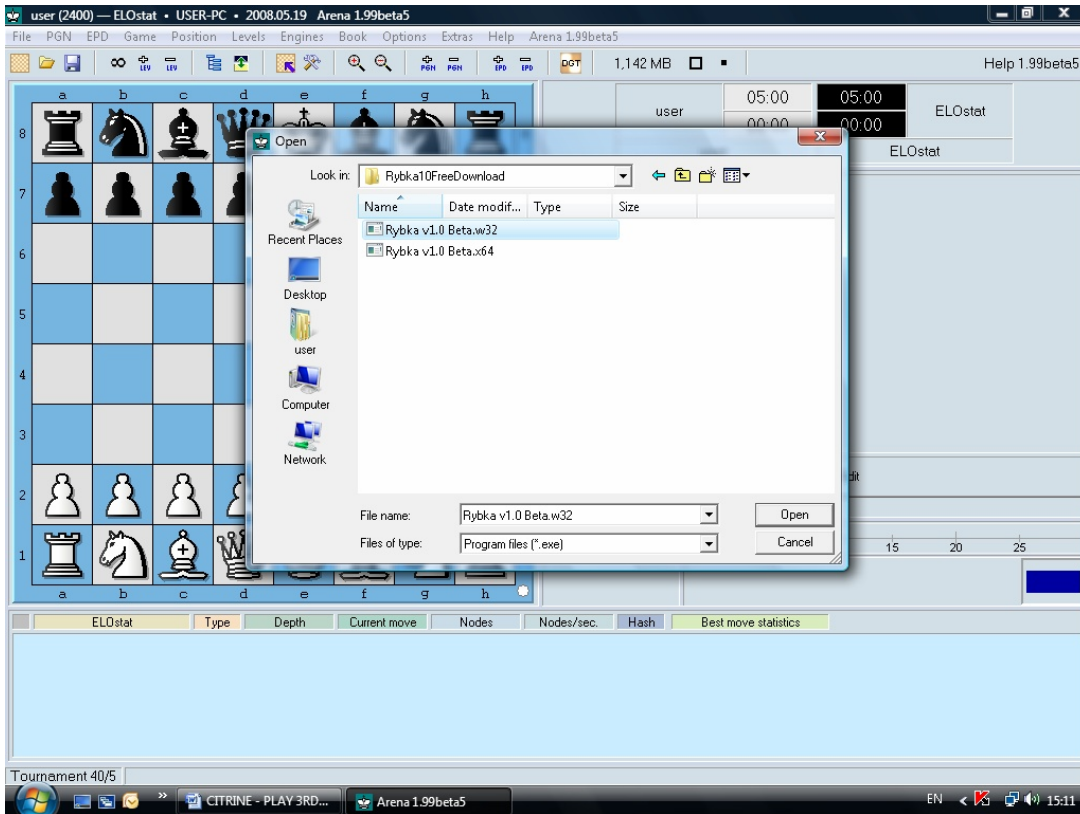
Set up the chess pieces in the opening position

Turn the unit ON.

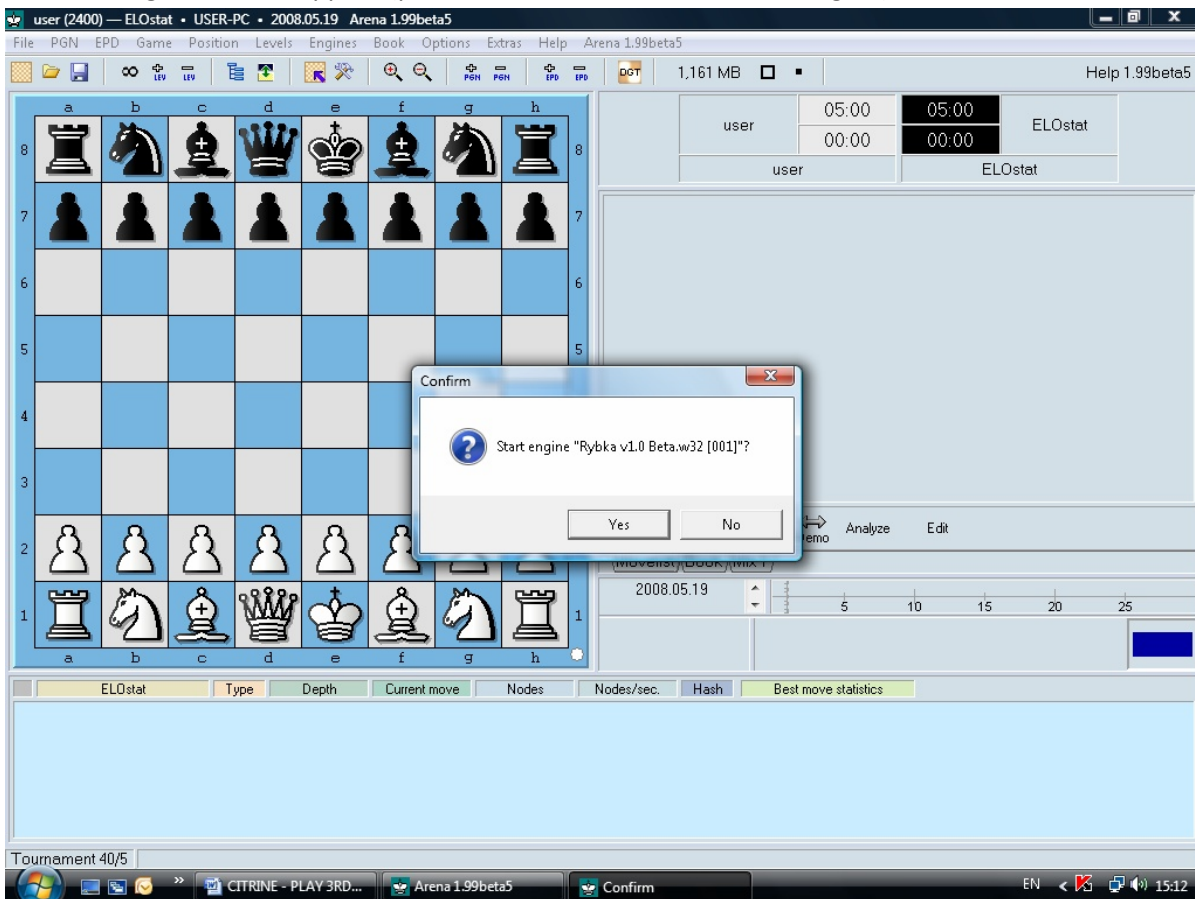
3. Open the ARENA GUI program and click ENGINES



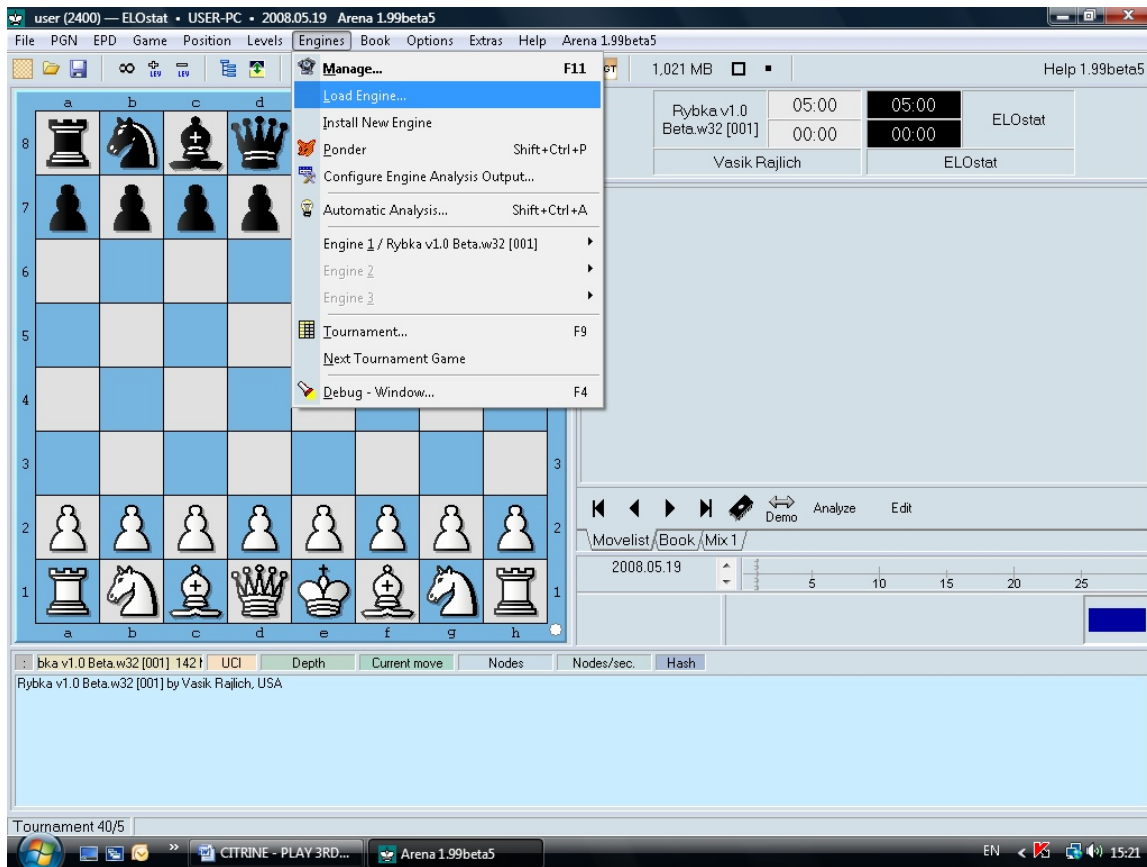
4. Click on INSTALL NEW ENGINE and choose the chess engine you want to use by either double clicking this engine or highlighting it with your cursor and clicking OPEN.



5. The following screen will appear (please click YES to start the chess engine):



6. Now click on ENGINES again and click on LOAD ENGINE:



7. Choose the chess engine you wish to play against, e.g. RYBKA and click OK.

8. Make your first move for white and the third-party software will make its countermove. This countermove will be displayed on the ARENA GUI and the relevant LEDs will light up on the chessboard.