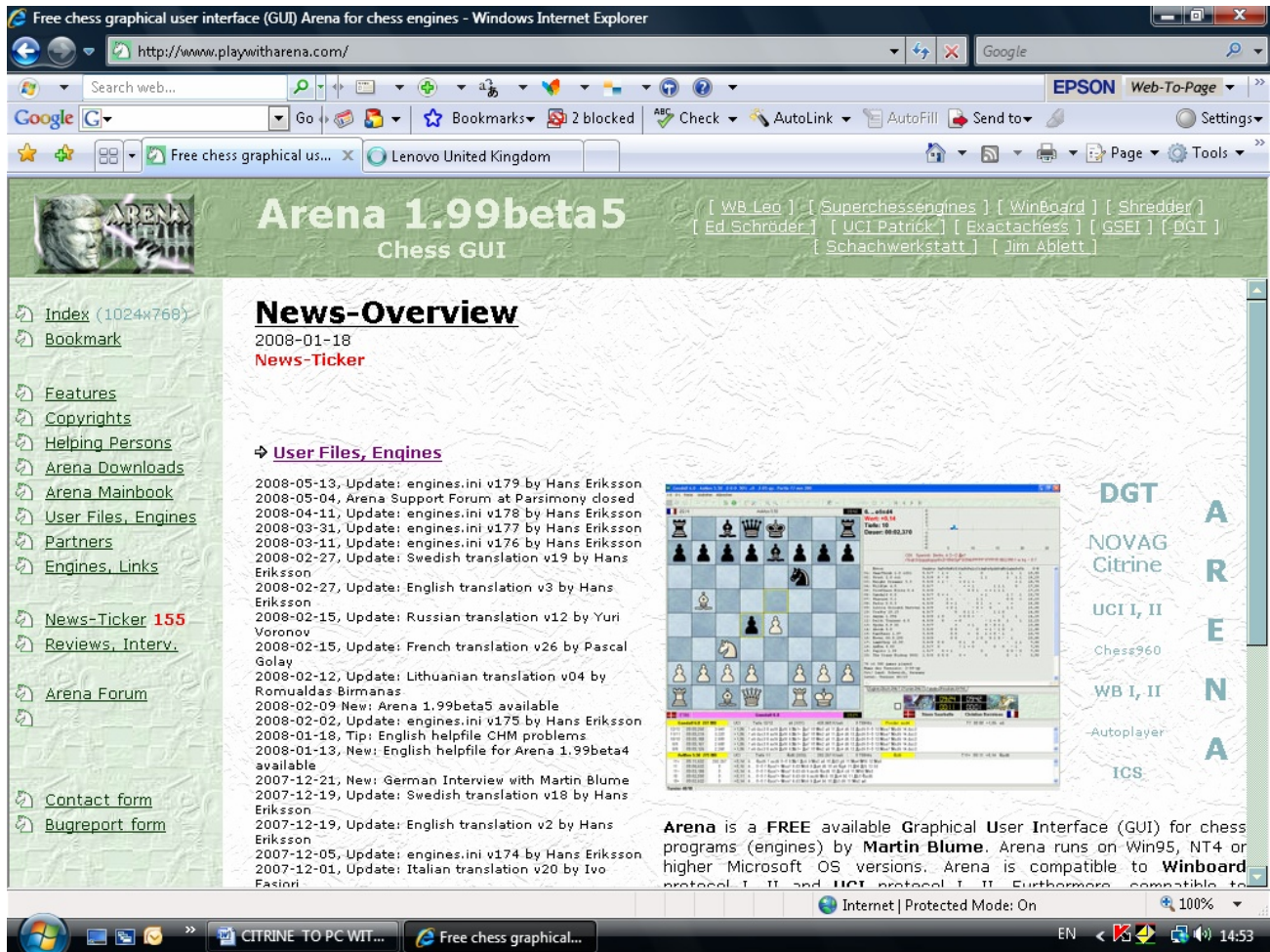


CITRINE TO PC WITH ARENA

The Novag Citrine is compatible with ARENA, a Graphical User Interface (GUI) for chess programs by MARTIN BLUME. Please refer to the following website for copyright and licensing prior to usage: <http://www.playwitharena.com/directory/copyright.htm>

1. Go to <http://www.playwitharena.com/>



2. Download the latest software from the ARENA DOWNLOAD site: <http://www.playwitharena.com/directory/download.htm> and follow their instructions.
3. Once downloaded save the copy in an easily accessible place, such as the DESKTOP.

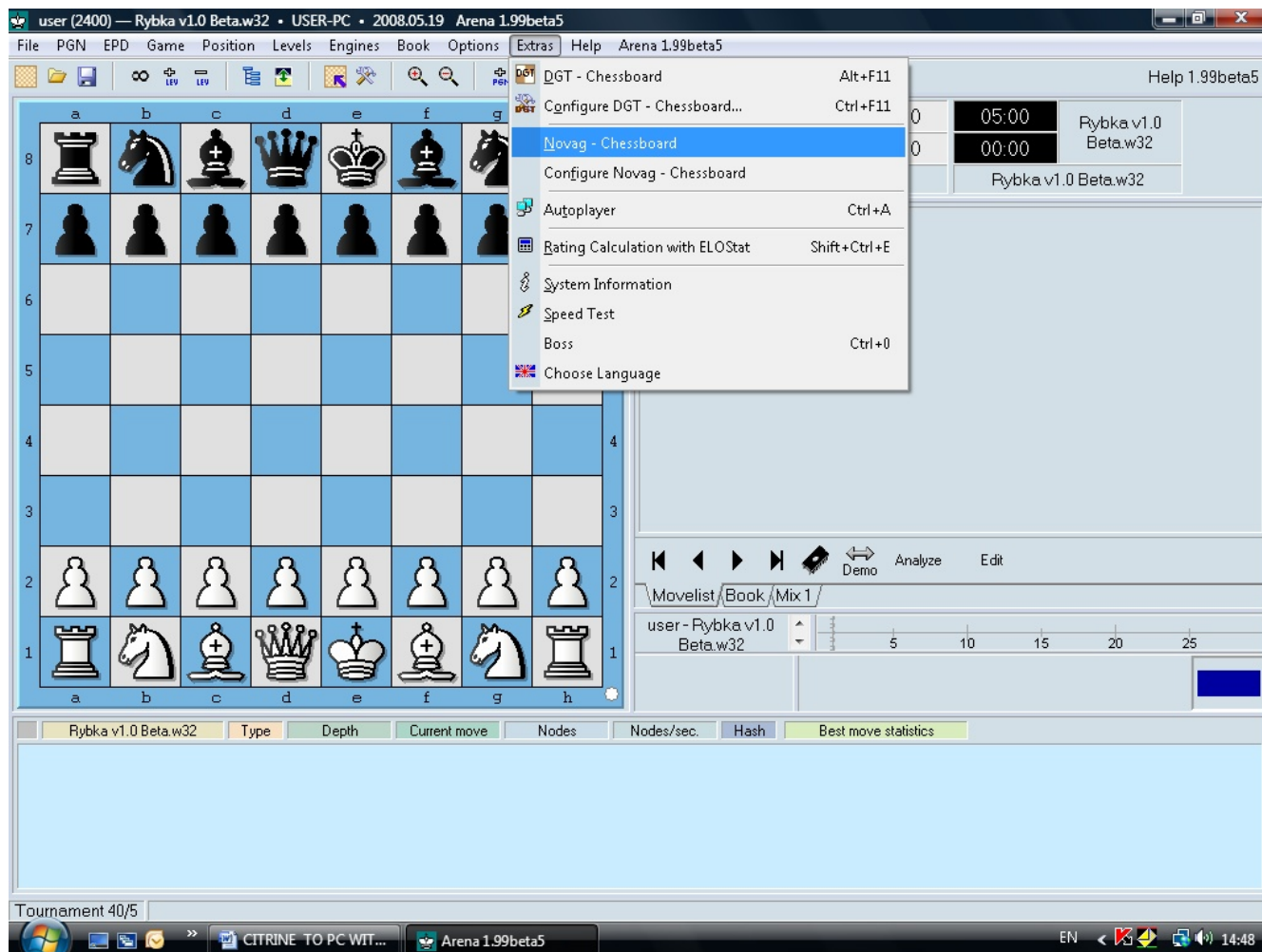
4. Set up your Citrine:

Connect your Citrine to your PC,
plug the chessboard into the mains,
set the chess pieces up and
turn the Citrine ON.

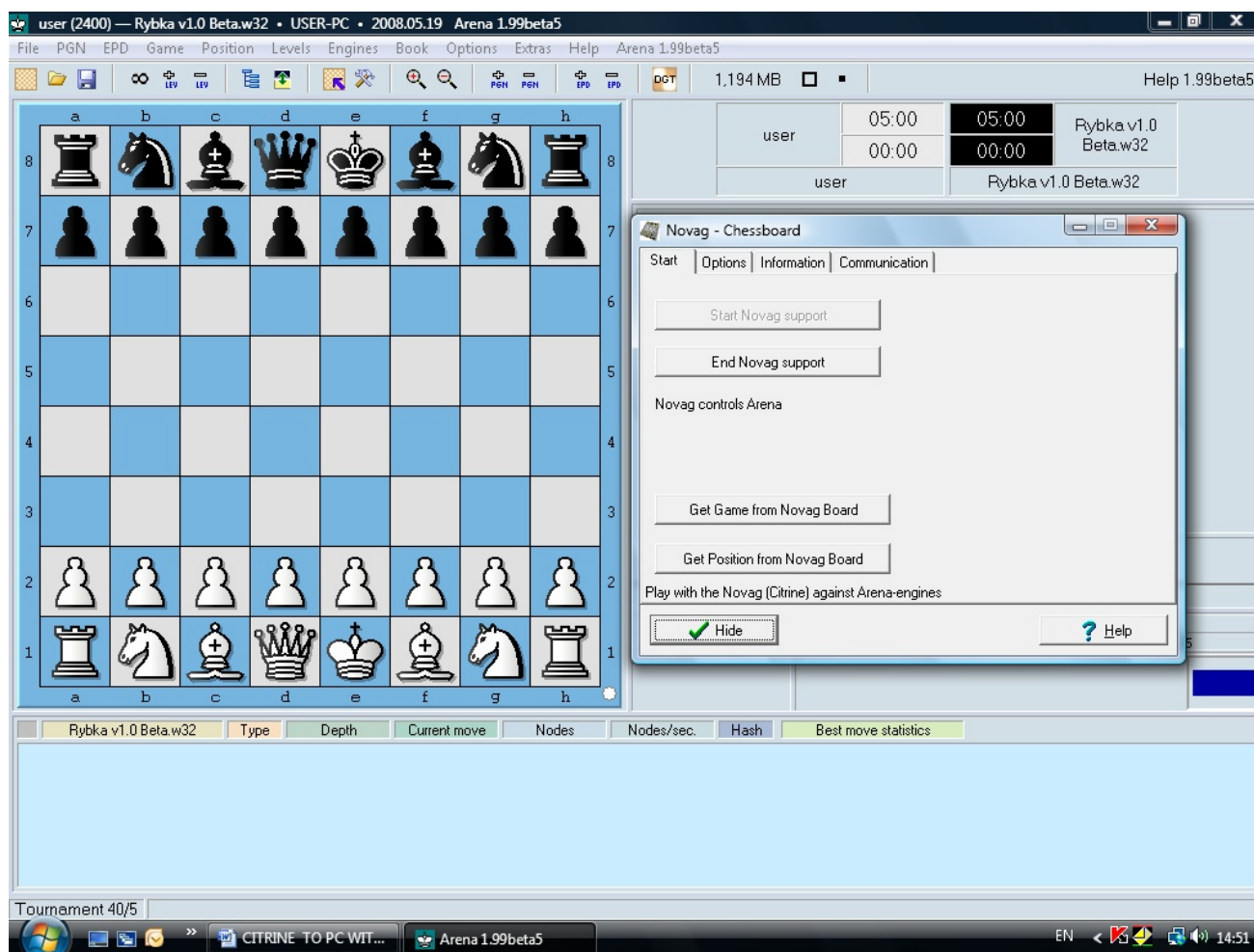
5. Double click the ARENA program to open.

6. Once opened, click EXTRAS

7. Under EXTRAS, click NOVAG-CHESSBOARD



Then the following window will appear:



Click on “Start Novag Support” and wait until the program has registered your Citrine. Once registered you can hide this window.

8. The ARENA software is now ready to display, print and save your game: Each time you make a move (or make a move for the Citrine), that move will be displayed in the ARENA GUI as well as on your chessboard.